

# DYNOMite Dynamometer Test Results



## Dario's Diesel Truck Center

Worcester, MA 01604  
(508) 753-8177

on 2019-07-15 @ 14-08-51

Filename: C:\Program Files (x86)\DYNO-MAX\Runs\Barlow Truck Lines INC\D13\Barlow Truck Lines INC #17 on 2019-07-

Test Run Name: : INC #17 on 2019-07-15 @ 14-08-51

Date: 7/15/2019

Test Run By: Yener

Time: 1:17 PM

Name: Barlow Truck Lines INC

Engine's Test Hours: 24.10

Vehicle: D13

Engine Type: #3- Four Stroke Diesel

### Engine

Engine Make: Volvo

Compression Ratio: 18.50 :1

Engine Model: D13

Engine Serial #: 1098300

Rod Length: 5.700 inches

Engine Description:

Bore: 131.0 mm

Advertised Power: 455.0 Hp @ 0 RPM

Stroke: 158.0 mm

Piston Description:

Displacement: 12.78 liters

### Vehicle

VIN/Serial Number:

Tire Diameter: 24.00 inches

Vehicle Description:

Speedometer Source: #0- Shaft RPM

Weight: 17000 lbs

Acceleration Source: #0- Speedometer

Coast Down: 0.055 G's @ Coast of: 55.00 mi/hr

Accelerometer Pitch Compensation: 1.000

Roller Diameter: 29.88 inches

Axle Ratio: 0.355

### Dyno

Gear Ratio: 0.504 1.984 :1

RPM Source: #1- RPM-C, RPM-C

Drive Ratio: 3.500 0.286 :1

Torque Source: #1- AWD/Twin DYNOMite E

@: 5252 RPM    ^: 0

@: 5252 RPM    ^: 2.000

Vehicle Speed Factor: 11.25 Rev/MPH

Notes: Customer requests a horse power and torque print out.

# Dario's Diesel Truck Center

Worcester, MA 01604

(508) 753-8177

DYNomite Test Run:

NC #17 on 2019-07-15 @ 14-08-51

Date: 7/15/2019

Correction Method: Standard

Notes: Customer requests a horse power and torque print

Sec (Seconds)	RPM (RPM)	Hp (Hp)	Torque (ft-lb)
0.000	1878	27.94	78.2
0.100	1878	26.76	74.9
0.200	1878	26.08	72.9
0.300	1878	26.04	72.8
0.400	1878	26.13	73.1
0.500	1878	26.00	72.7
0.600	1878	25.30	70.8
0.700	1878	24.19	67.7
0.800	1877	22.91	64.1
0.900	1877	21.54	60.3
1.001	1875	20.86	58.4
1.101	1874	21.43	60.1
1.201	1872	24.52	68.8
1.301	1870	30.16	84.7
1.401	1867	38.92	109.5
1.501	1864	48.51	136.7
1.601	1861	60.06	169.5
1.701	1858	72.98	206.4
1.801	1854	88.30	250.1
1.901	1851	105.5	299.5
2.002	1848	123.6	351.2
2.102	1845	143.8	409.4
2.202	1842	161.9	461.8
2.302	1839	180.0	514.1
2.402	1837	196.1	560.9
2.502	1834	209.3	599.4
2.602	1831	219.7	630.2
2.702	1828	226.8	651.5
2.802	1825	233.4	671.8
2.902	1821	240.4	693.5
3.003	1817	248.4	718.2
3.103	1812	257.1	745.2
3.203	1808	265.9	772.6
3.303	1803	275.4	802.1
3.403	1799	284.1	829.4
3.503	1795	292.5	856.1
3.603	1791	300.2	880.7
3.703	1787	307.1	902.8
3.803	1782	313.8	924.5
3.903	1779	319.7	944.2
4.004	1775	326.0	964.8
4.104	1771	332.0	984.8
4.204	1767	338.1	1005.0
4.304	1763	344.1	1025.1
4.404	1759	349.3	1043.0
4.504	1755	353.9	1059.2
4.604	1751	357.5	1072.6
4.704	1746	360.8	1085.1
4.804	1742	363.9	1097.4
4.904	1737	367.1	1109.8
5.005	1732	370.2	1122.3
5.105	1728	372.8	1133.3
5.205	1723	375.0	1143.0
5.305	1719	376.9	1151.7
5.405	1714	378.7	1160.4
5.505	1709	380.3	1168.4
5.605	1705	381.5	1175.1
5.705	1700	382.5	1181.7
5.805	1696	383.6	1188.3
5.905	1691	384.9	1195.6
6.006	1686	386.3	1203.1
6.106	1682	387.4	1209.9
6.206	1677	388.5	1217.0
6.306	1672	389.7	1224.0

# Dario's Diesel Truck Center

Worcester, MA 01604

(508) 753-8177

DYNomite Test Run:

INC #17 on 2019-07-15 @ 14-08-51

Date: 7/15/2019

Correction Method: Standard

Notes: Customer requests a horse power and torque print

Sec (Seconds)	RPM (RPM)	Hp (Hp)	Torque (ft-lb)
6.406	1667	390.8	1231.1
6.506	1663	391.8	1237.6
6.606	1658	392.4	1243.0
6.706	1653	392.6	1247.3
6.806	1649	392.6	1250.5
6.906	1644	392.6	1254.2
7.007	1639	392.8	1258.3
7.107	1635	393.1	1262.9
7.207	1630	393.5	1267.8
7.307	1625	393.7	1272.0
7.407	1621	393.6	1275.4
7.507	1616	393.4	1278.4
7.607	1611	393.2	1281.7
7.707	1607	393.3	1285.8
7.807	1602	393.8	1291.0
<b>7.907</b>	<b>1597</b>	<b>393.9</b>	<b>1295.6</b>
8.008	1592	393.1	1296.9
8.108	1587	390.8	1293.4
8.208	1582	386.8	1284.1
8.308	1577	382.1	1272.8
8.408	1571	377.9	1263.2
8.508	1566	375.4	1259.2
8.608	1561	375.0	1262.0
8.708	1556	375.7	1268.3
8.808	1551	376.4	1274.3
8.908	1546	376.6	1278.9
9.009	1542	376.1	1281.0
9.109	1537	375.5	1282.9
9.209	1533	375.1	1285.1
9.309	1529	374.9	1287.9
9.414	1524	375.1	1293.2
9.514	1519	375.6	1298.4
9.614	1515	376.2	1304.7
9.714	1510	377.0	1311.2
9.814	1505	377.7	1317.9
9.914	1500	378.5	1324.9
10.015	1496	379.5	1332.3
10.115	1491	380.5	1340.4
10.215	1486	381.4	1347.8
10.315	1481	382.1	1354.9
10.415	1476	382.7	1361.5
10.515	1472	383.3	1368.0
10.615	1467	384.3	1376.2
10.715	1462	385.4	1384.7
10.815	1457	386.6	1393.9
10.915	1452	387.7	1402.4
11.016	1447	388.1	1408.6
11.116	1442	388.1	1413.4
11.216	1437	387.9	1417.2
11.316	1433	387.8	1421.7
11.416	1428	388.0	1427.5
11.516	1423	388.4	1433.6
11.616	1418	388.7	1439.9
11.716	1413	388.7	1444.8
11.816	1408	388.4	1448.7
11.916	1403	388.1	1452.4
12.017	1399	387.7	1456.0
12.117	1394	387.6	1460.6
12.217	1389	387.6	1465.7
12.317	1384	387.6	1471.1
12.417	1379	387.5	1475.8
12.517	1374	387.3	1480.2
12.617	1369	387.0	1484.4
12.717	1365	386.9	1488.8

# Dario's Diesel Truck Center

Worcester, MA 01604

(508) 753-8177

DYNomite Test Run:

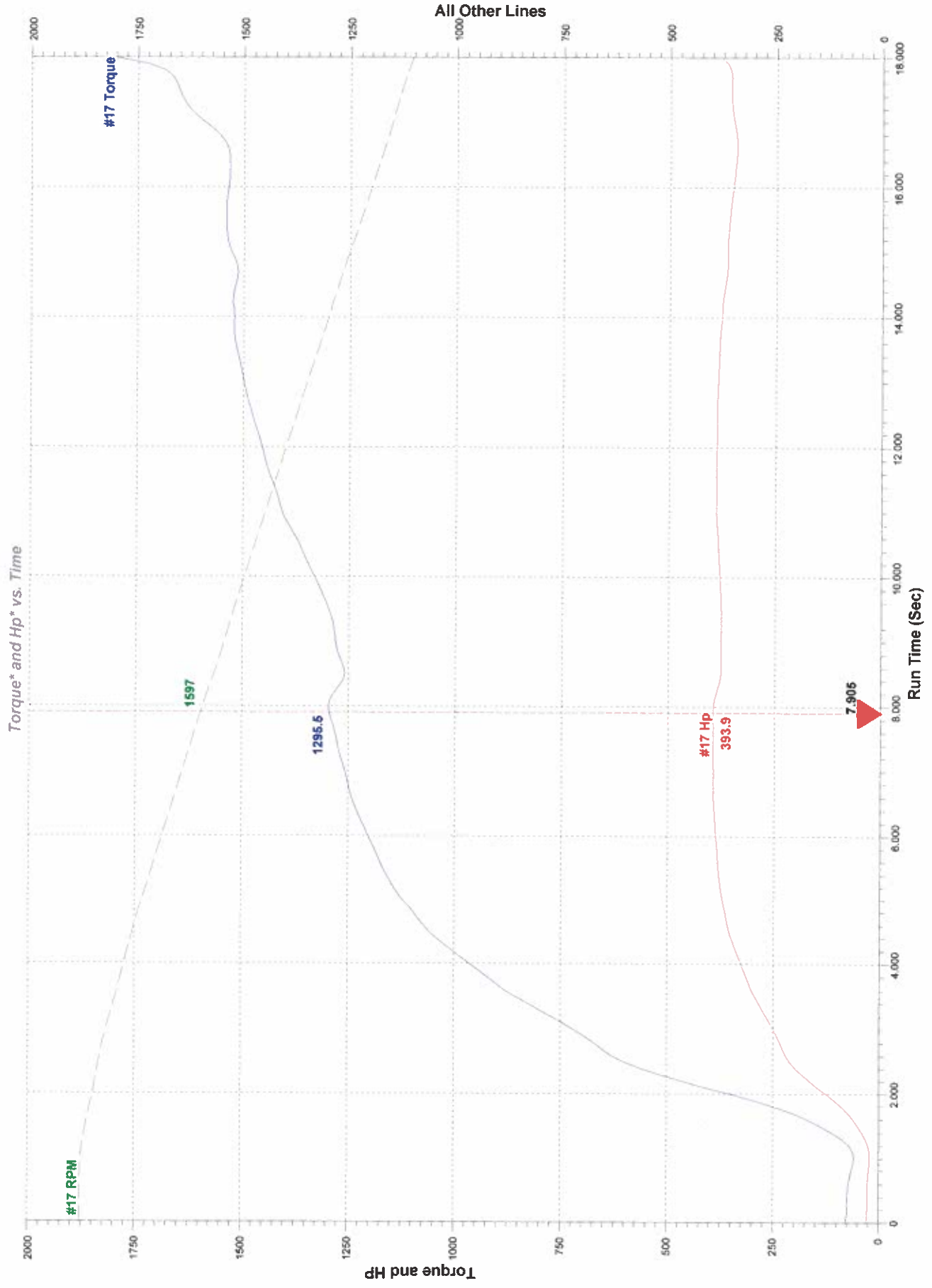
[#17 on 2019-07-15 @ 14-08-51](#)

Date: [7/15/2019](#)

Correction Method: [Standard](#)

Notes: [Customer requests a horse power and torque print](#)

Sec (Seconds)	RPM (RPM)	Hp (Hp)	Torque (ft-lb)
12.817	1360	386.6	1493.1
12.917	1355	386.2	1496.8
13.018	1350	385.6	1500.1
13.118	1345	384.8	1502.7
13.218	1340	384.2	1505.8
13.318	1335	383.6	1509.4
13.418	1330	383.0	1512.9
13.518	1325	382.5	1516.7
13.618	1320	381.8	1519.8
13.718	1315	380.9	1521.6
13.818	1310	379.6	1522.5
13.918	1305	378.3	1522.6
14.019	1300	376.9	1522.7
14.119	1295	375.5	1522.8
14.219	1292	375.5	1526.3
14.392	1282	371.9	1523.4
14.494	1278	369.8	1520.3
14.594	1273	367.5	1516.1
14.694	1268	365.6	1514.1
14.794	1263	364.5	1515.8
14.894	1258	364.3	1521.0
14.995	1252	364.4	1528.4
15.095	1247	364.4	1534.5
15.195	1242	363.8	1538.7
15.295	1237	362.7	1540.6
15.395	1231	361.4	1541.5
15.495	1226	359.9	1541.7
15.595	1221	358.5	1541.9
15.695	1216	357.0	1542.0
15.795	1211	355.3	1540.9
15.895	1206	353.4	1539.1
15.996	1201	351.4	1536.8
16.096	1196	349.5	1534.9
16.196	1191	347.8	1533.8
16.296	1186	346.3	1533.5
16.396	1181	344.8	1533.7
16.496	1176	343.5	1534.5
16.596	1171	342.7	1537.5
16.696	1166	342.8	1544.5
16.796	1161	344.0	1556.3
16.896	1157	346.3	1572.7
16.997	1152	349.3	1593.0
17.097	1148	352.0	1611.1
17.197	1143	354.1	1626.8
17.297	1139	355.3	1638.2
17.397	1135	355.7	1646.3
17.497	1130	355.6	1652.8
17.597	1125	355.5	1659.2
17.697	1120	355.6	1667.2
17.797	1115	357.6	1684.5
17.897	1110	364.6	1724.9
17.998	1105	379.1	1801.2



\* Correction Method: Standard

Notes: Customer requests a horse power and torque print

Peak Power: 393.9 Hp @ 1597 RPM